



G2 Goldfields

**Drilling One Of The World's
Highest Grade Gold Deposits**

Corporate Presentation

February 2025

TSX: GTWO

OTCQX: GUYGF

Forward Looking Statements

This presentation contains certain forward-looking statements. wherever possible, words such as "may", "will", "should", "could", "expect", "plan", "intend", "anticipate", "believe", "estimate", "predict" or "potential" or the negative or other variations of these words, or similar words or phrases, have been used to identify these forward-looking statements. these statements reflect management's current beliefs and are based on information currently available to management as at the date hereof. forward-looking statements involve significant risk, uncertainties and assumptions. many factors could cause actual results, performance or achievements to differ materially from the results discussed or implied in the forward-looking statements. these factors should be considered carefully and readers should not place undue reliance on the forward-looking statements. although the forward-looking statements contained in this presentation are based upon what management believes to be reasonable assumptions, the company cannot assure readers that actual results will be consistent with these forward-looking statements. the company assumes no obligation to update or revise them to reflect new events or circumstances, except as required by law. Dan Noone, CEO and Director of G2 Goldfields Inc., is the qualified person, within the meaning of NI 43-101 and has reviewed the technical content of this presentation.



Executive Summary

WHY
G2?

▶ 2 Million Oz. Resource & Growing

- ✓ Currently 3 drills turning at Ghanie
- ✓ Updated MRE expected Q1 of 2025

▶ High Grade Deposit

- ✓ Averaging 9.03 g/t Au (Ind.) in OMZ Resource

▶ Near Deposit Discovery and Targets

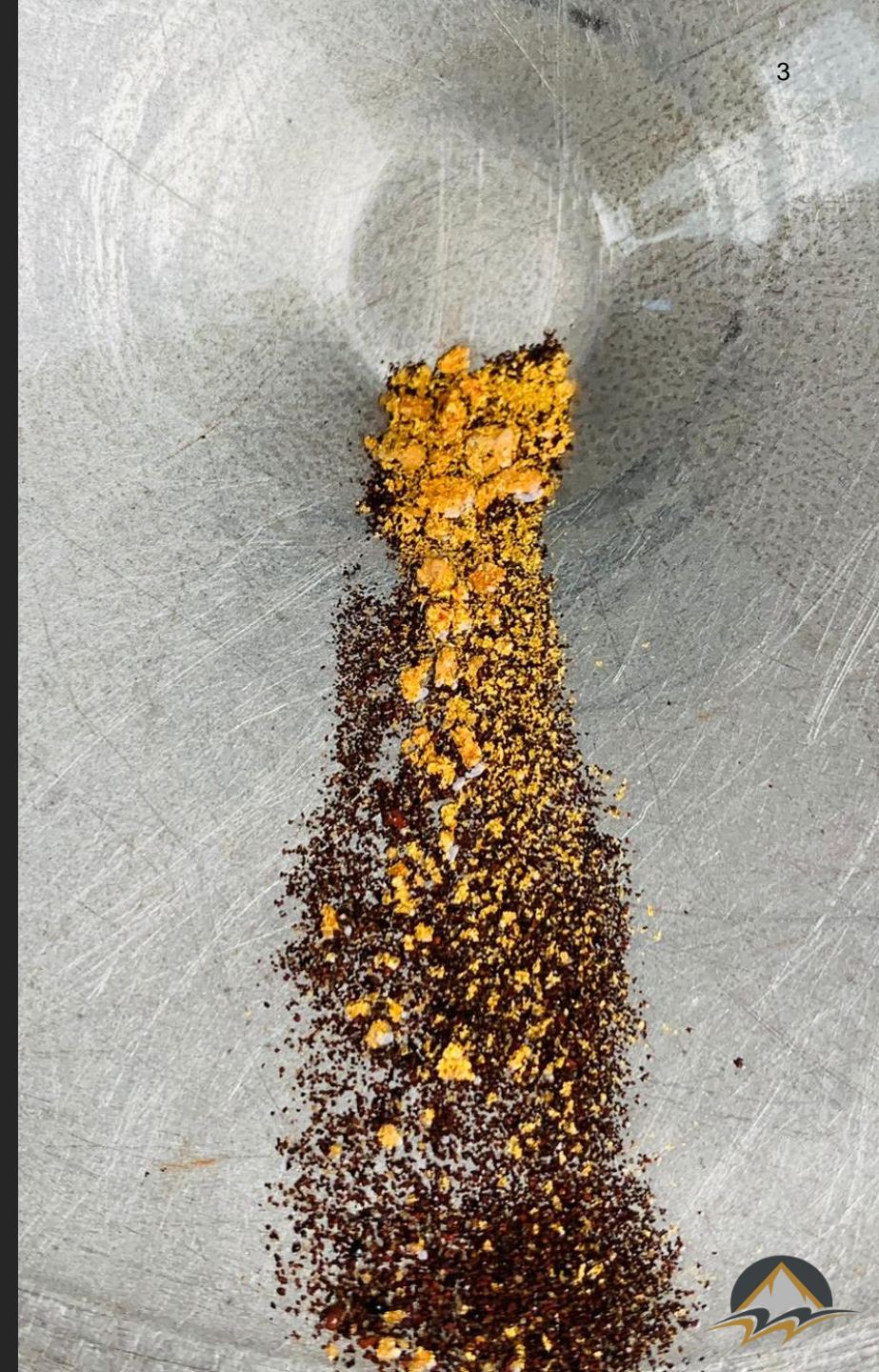
- ✓ Oko NW (4km NW of Oko), Oko North, Amsterdam (currently drilling)

▶ G3 Spin Out

- ✓ +50,000 acres
- ✓ Adjacent to Oko Deposit
- ✓ Contains 3 past high-grade underground producers (Peters, Aremu and Wariri Mines)
- ✓ +35km long trend

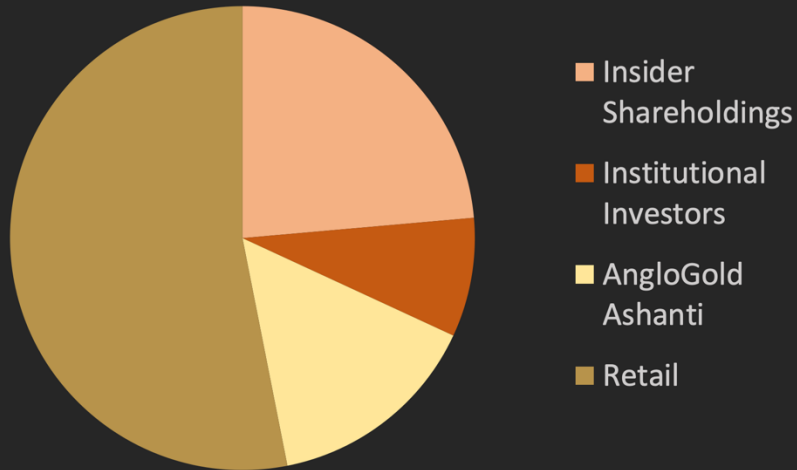
▶ Premier Jurisdiction

- ✓ and exceptionally experienced management



Company Overview

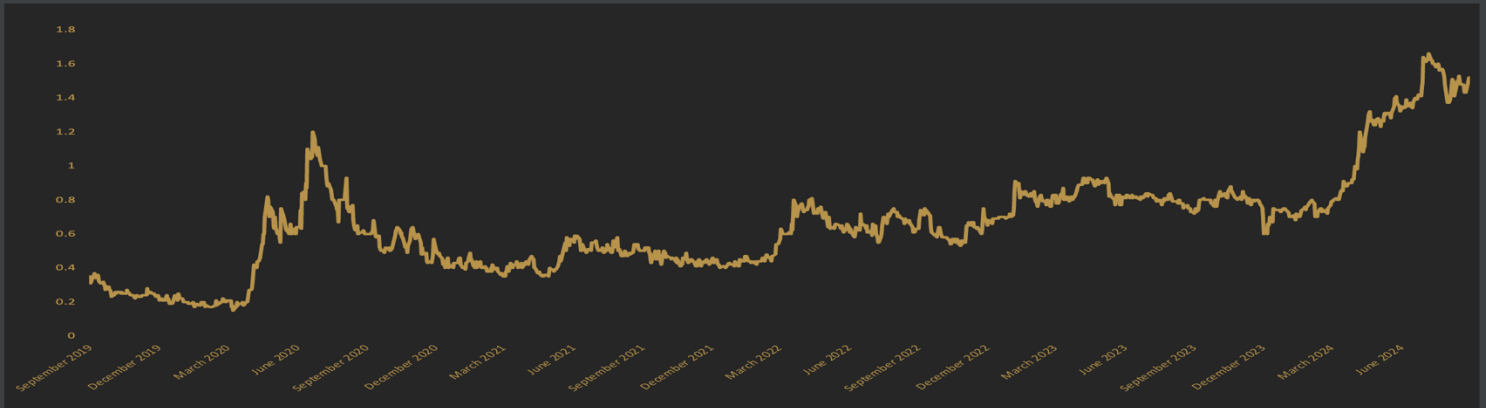
Investor Profile



Stock Profile

Common Shares Outstanding:	240,487,164
Insider Shareholding:	56,988,202
Shares Fully Diluted:	263,827,164
Cash Position:	37,000,000 CAD

G2 Goldfields TSX 5-Year Trading History



Oko Main Zone (OMZ) Resource

- ▶ 495,000 oz. Au – Inferred contained within 2,413,000 tonnes @ **6.38 g/t Au** (total OP + UG)
- ▶ 686,000 oz. Au – Indicated contained within 2,368,000 tonnes @ **9.03 g/t Au** (total OP + UG)
- ▶ Estimates gold content hosted by **three primary shear zones**
- ▶ Covers up to a **vertical depth of 500 metres**
- ▶ Reported at a **1.8 g/t gold cut-off**
- ▶ Remains **open**

Ghanie Zone Resource

- ▶ 604,000 oz. Au – Inferred contained within 12,216,000 tonnes @ **1.54 g/t Au** (total OP + UG)
- ▶ 236,000 oz. Au – Indicated contained within 3,344,000 tonnes @ **2.20 g/t Au** (total OP + UG)
- ▶ **21,654 metres** drilled (Ghanie) since the previous Mineral Resource



Record of success in Guyana

“... a significant underexplored region and one of the most prospective in the world for large scale gold discoveries.” Mark Bristow | Barrick Gold

Aurora, Guyana



Executive Chairman

Patrick Sheridan

LSE-educated economist with 25+ years' experience in the Guiana Shield. Over \$400 million raised for exploration & development. Credited with finding, financing and developing the Aurora Mine (6.5 Moz). Involved in sales of Gold Eagle Mines (GEA.TO) & FNX Mining (FNX.TO).

Lihir, PNG



CEO

Dan Noone

Over 30 years in the industry, taking projects from grassroots to feasibility and production (PNG, Guyana, Indonesia, Peru, Ecuador & Argentina). Previously VP Exploration (GUY.TO), V.P.Peru (AQL-TO) and President (ABS.V). Fellow of the Australian Institute of Geoscientists.

Saramacca, Suriname



COO

Torben Michalsen

Extensive expertise in design optimisation, procurement, permitting and large-scale infrastructure projects (i.e. road access). Acquired in-country knowledge as former CGM Construction Manager (Toroparu) and IAMGOLD Construction Superintendent (Rosebel).

Karouni, Guyana



VP Exploration

Boaz Wade

Former manager of the Aurora Gold Mine exploration geology team. Senior member of the team responsible for successfully reinterpreting mineralization controls at Aurora as well as remodeling the Kaoruni deposits (Troy Resources). BEng (Geological), University of Guyana.



Guyana Economy Overview



- ▶ Guyana was the world's fastest-growing economy in 2022, achieving a real GDP growth rate of 62.4%, followed by 38% growth in 2023
- ▶ Continued strong economic forecasts looking into 2024 and 2025



- ▶ Massive offshore oil discoveries in 2015 have fueled this growth and established Guyana as a key strategic oil producer for the West
- ▶ Estimated 18.7 Billion barrels of oil equivalent

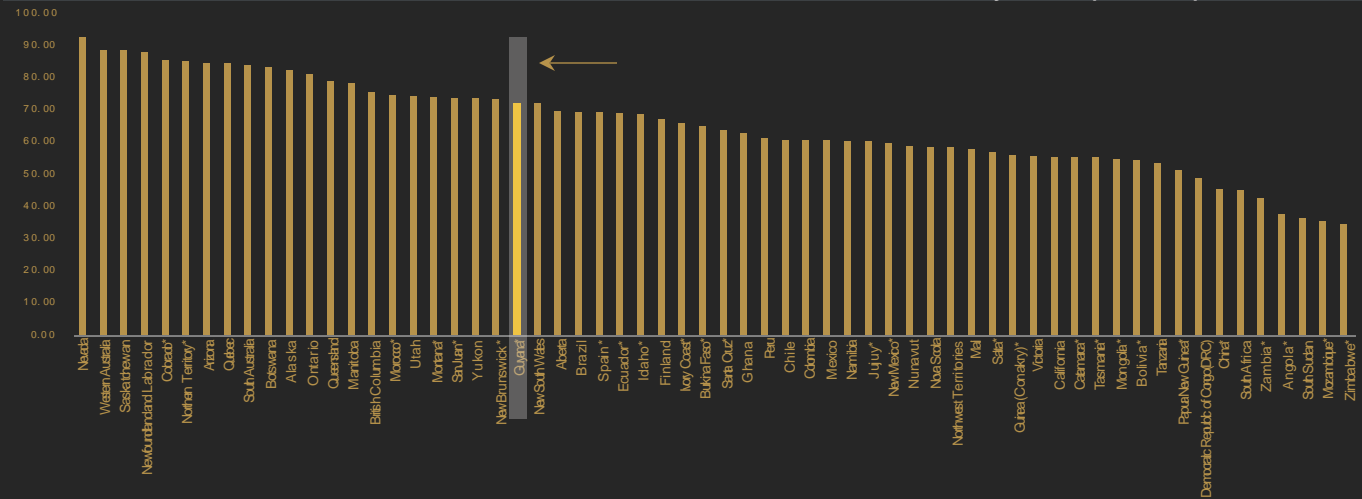


- ▶ English-speaking, British rule of law and British parliamentary system of government

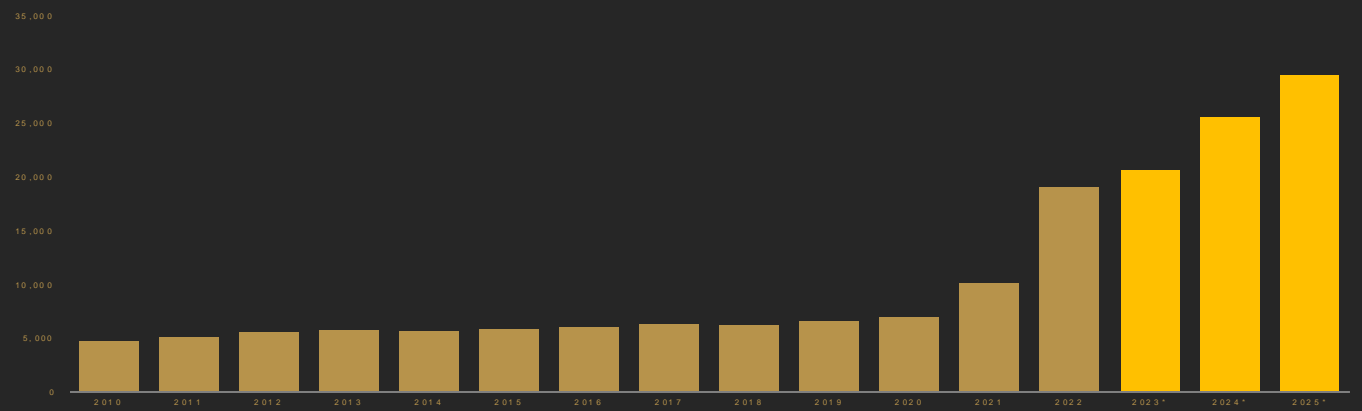


- ▶ Mining-friendly and straightforward permitting
- ▶ Mining is still a key employer within the country, employing between 15,000- 20,000 workers
- ▶ Mining was 5% of Guyana's GDP in 2022

2022 Fraser Institute Investment Attractiveness index: Guyana up 27.5 points



World's Fastest Growing Economy: Guyana GDP (USD) per Capita

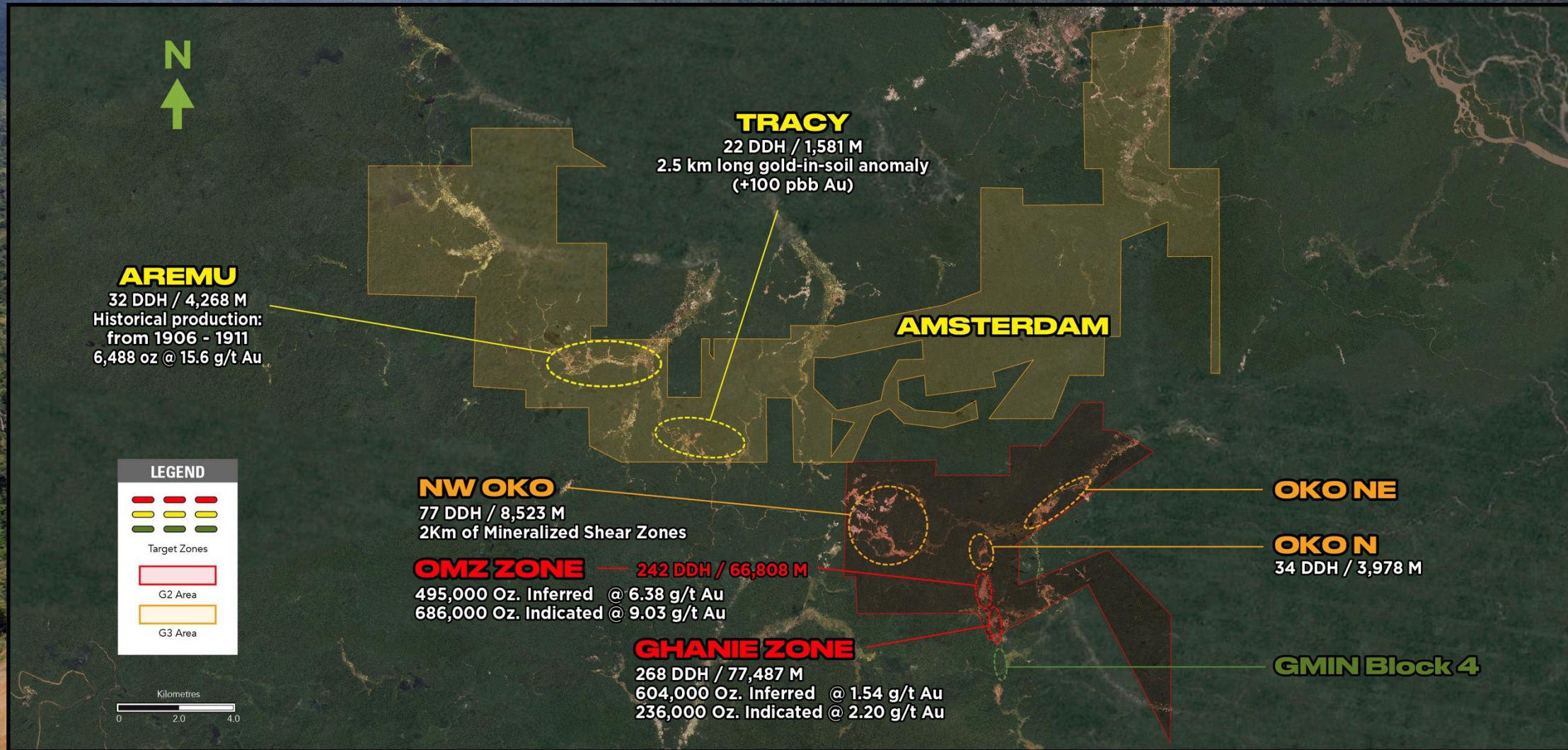


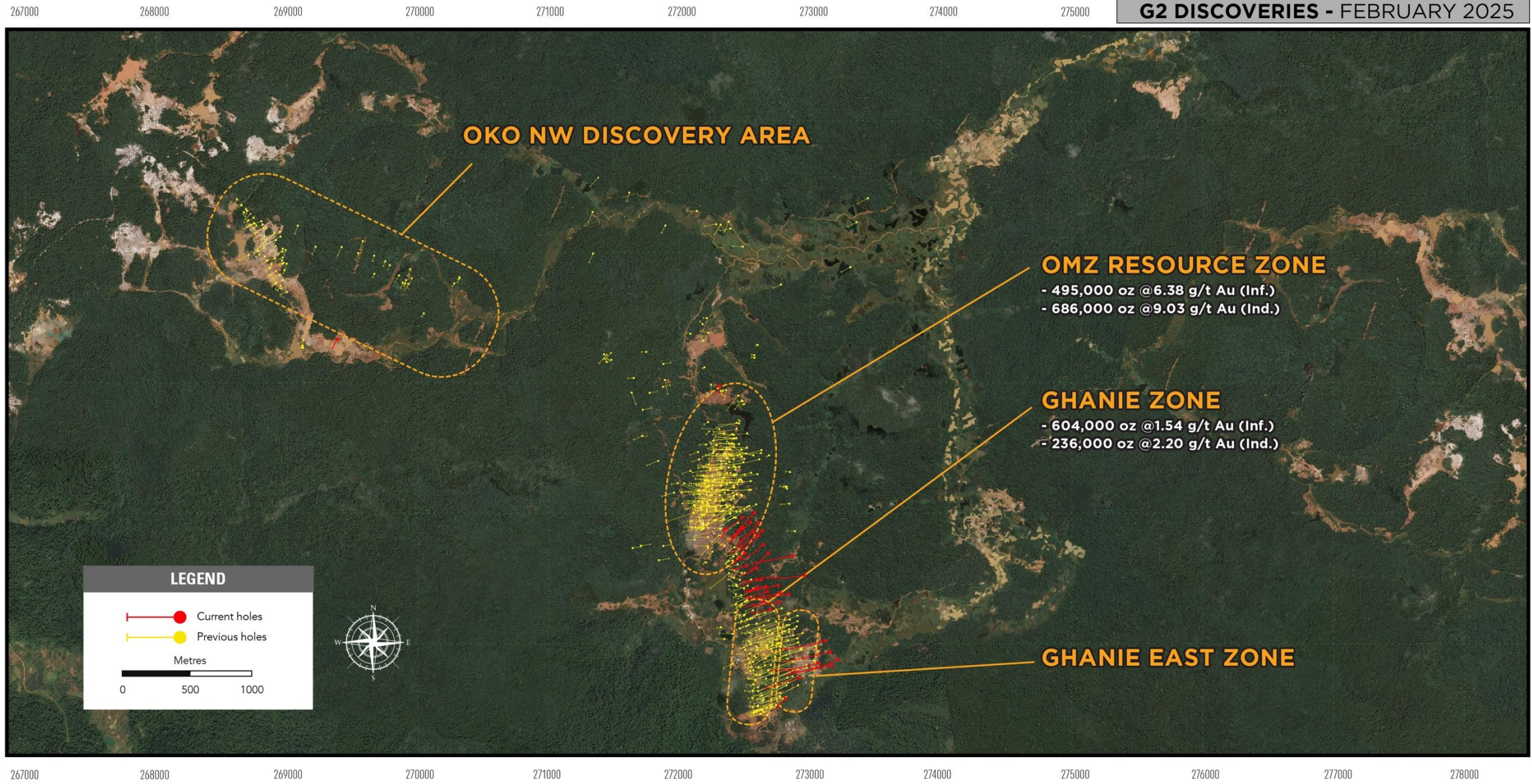
Source: World Bank, Statista



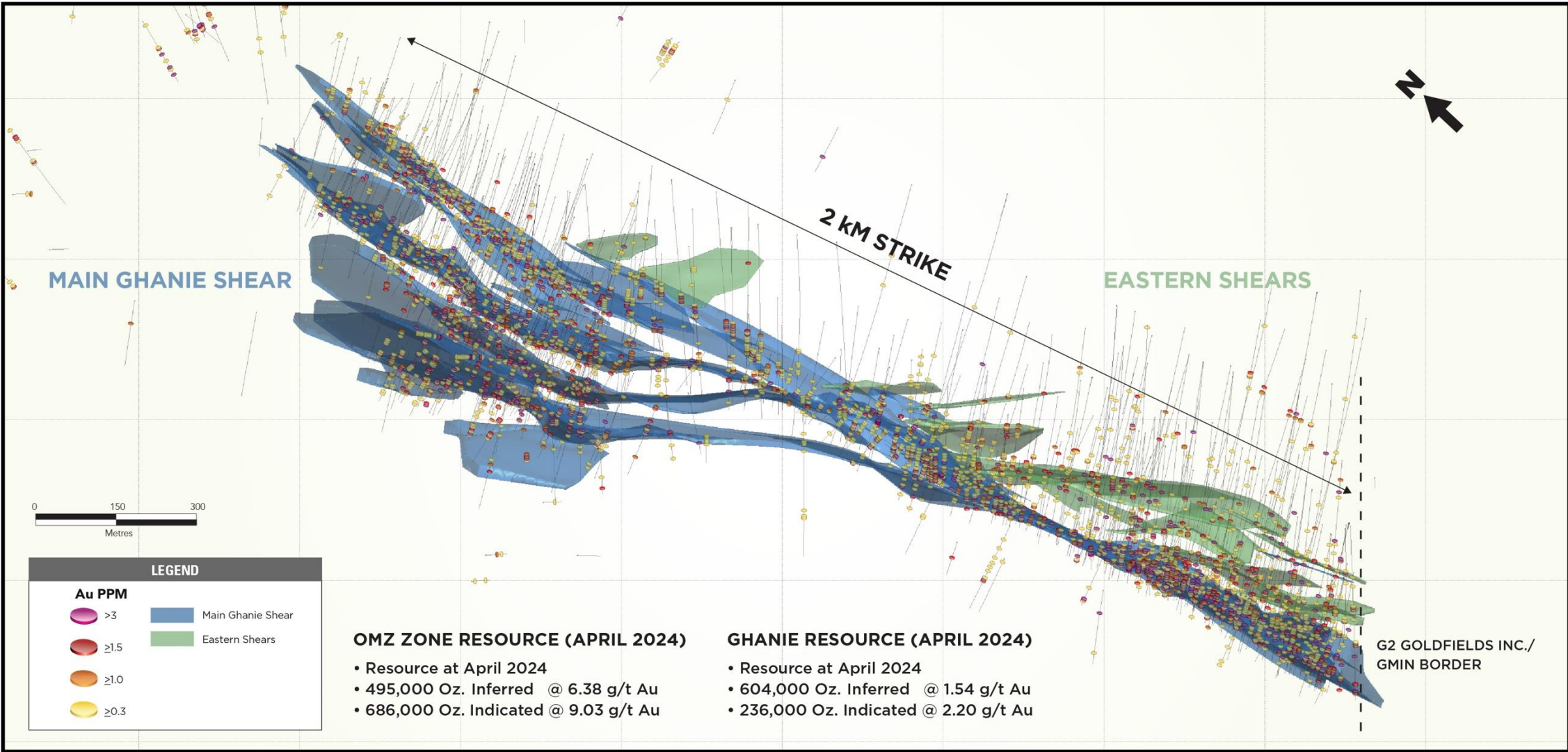
MAJOR MINING ACTIVITIES IN THE GUIANA SHIELD



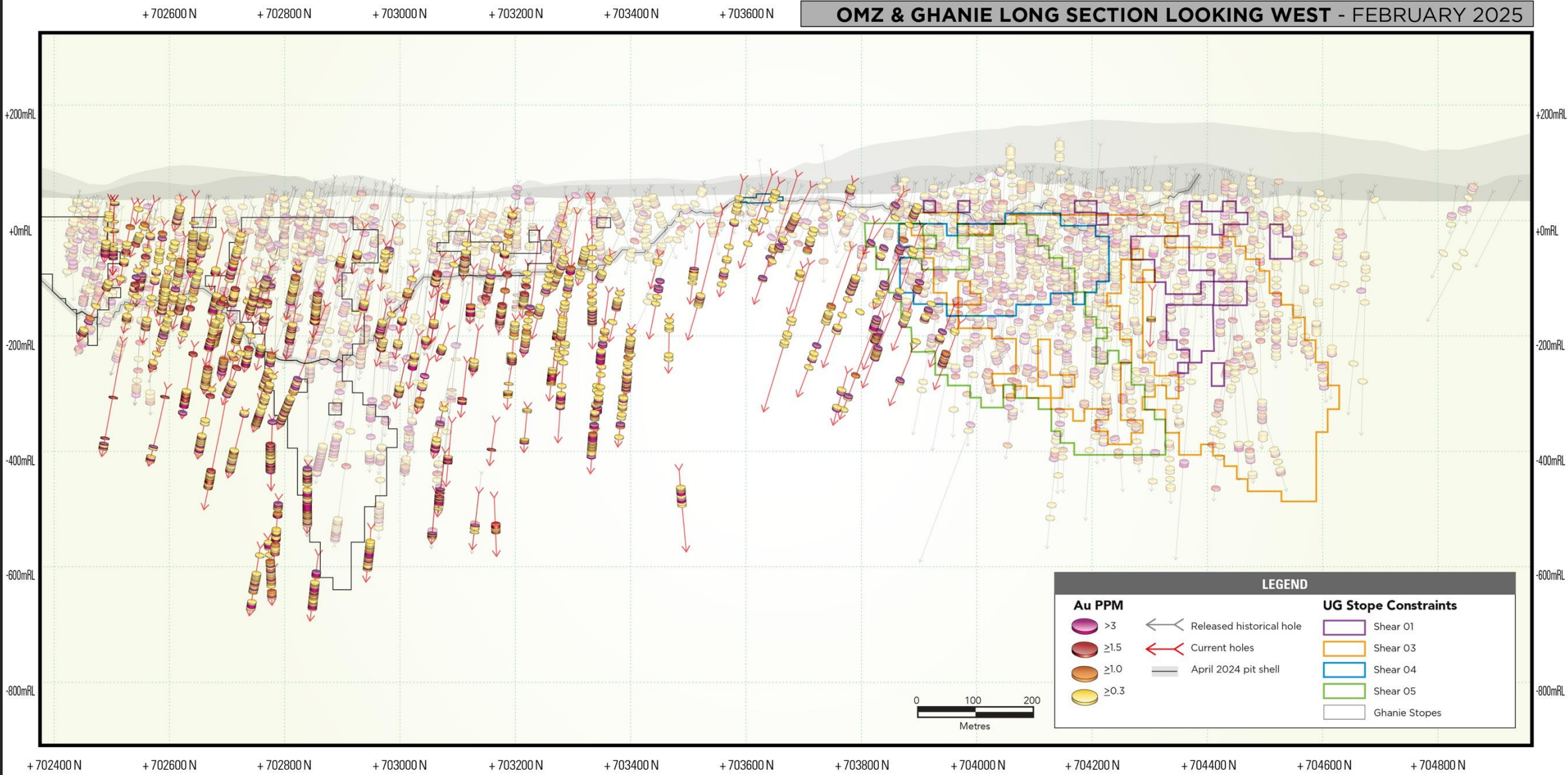




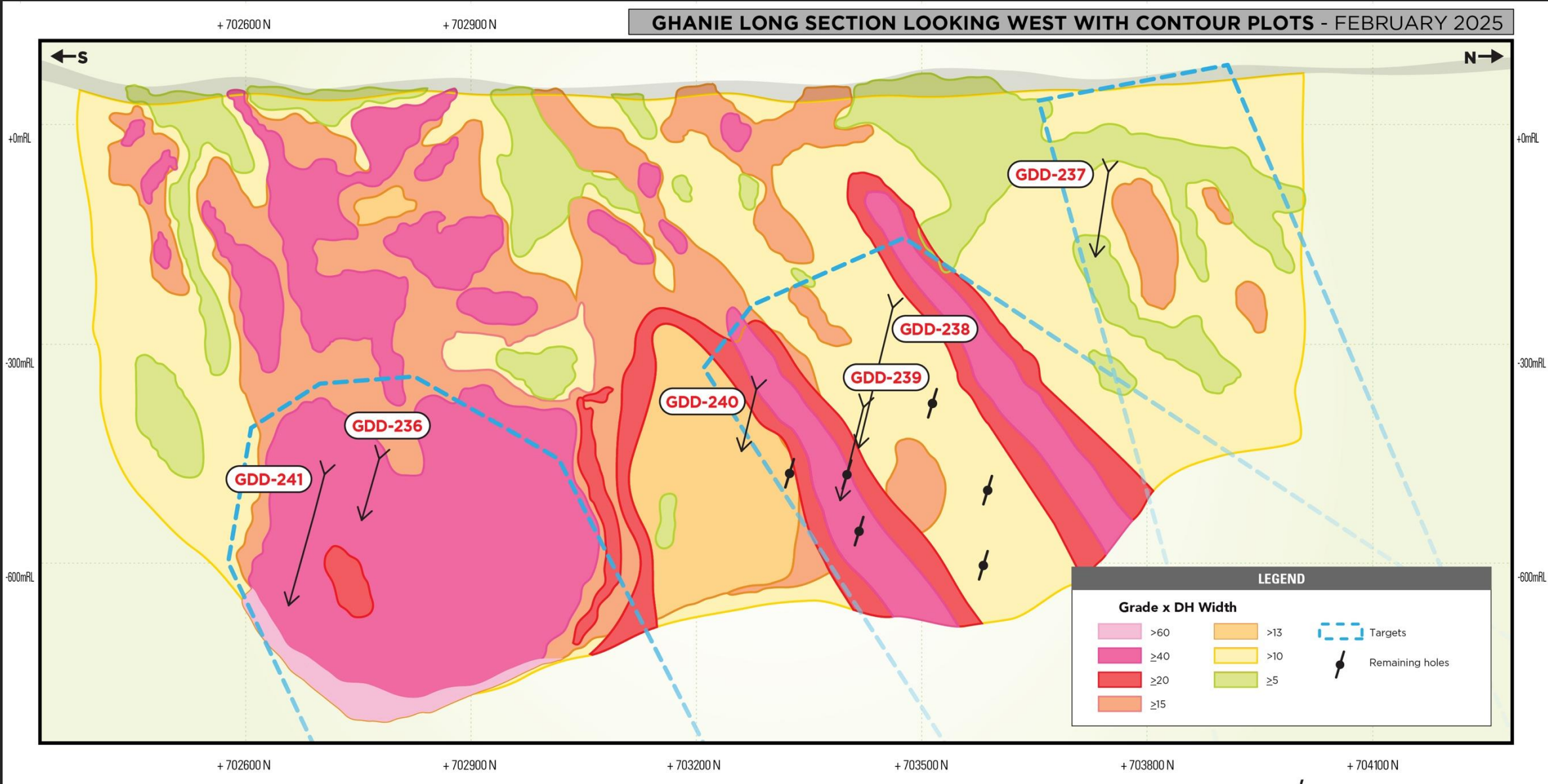
GHANIE DESPOSIT OBLIQUE VIEW WITH MINERALIZATION - FEBRUARY 2025



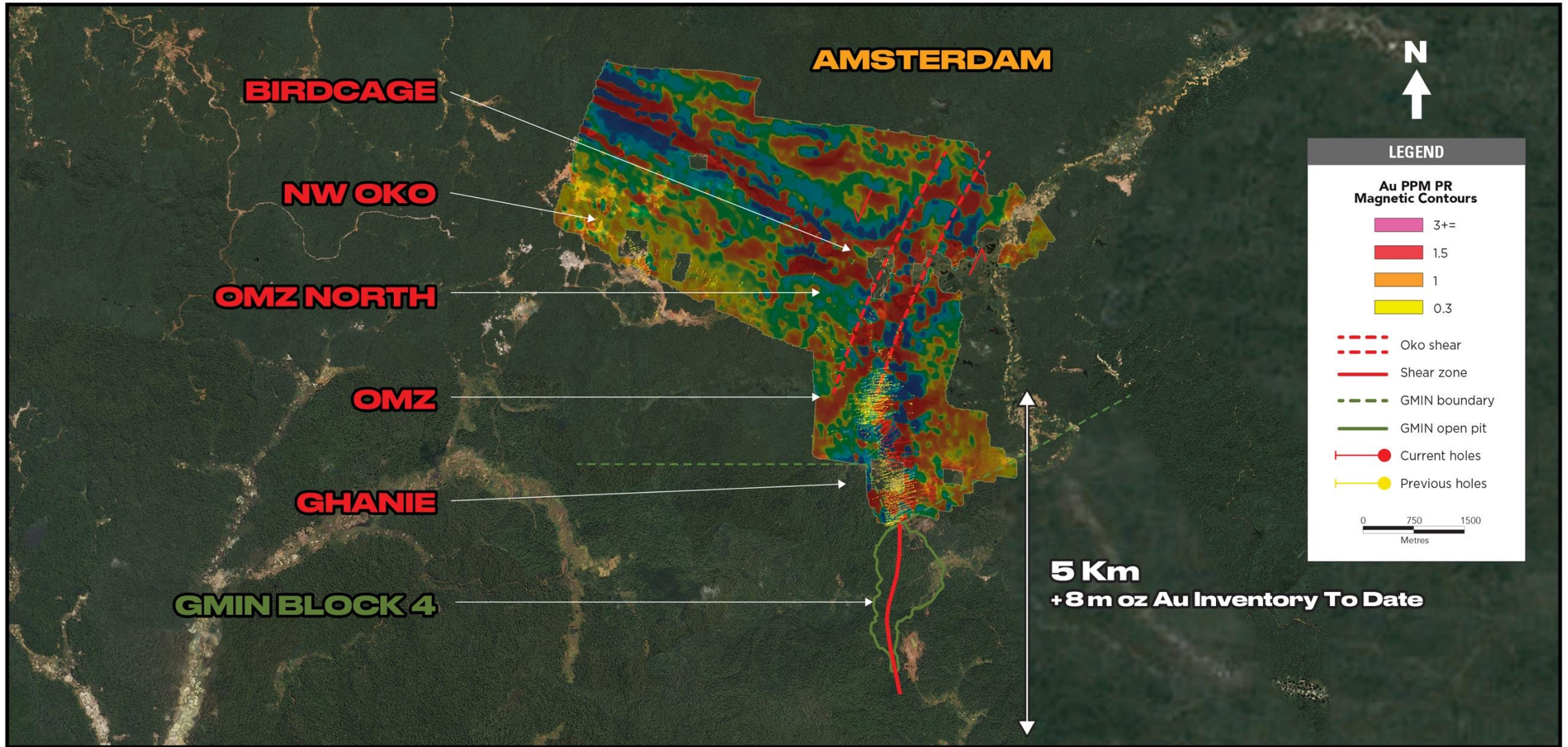
OMZ & GHANIE LONG SECTION LOOKING WEST - FEBRUARY 2025



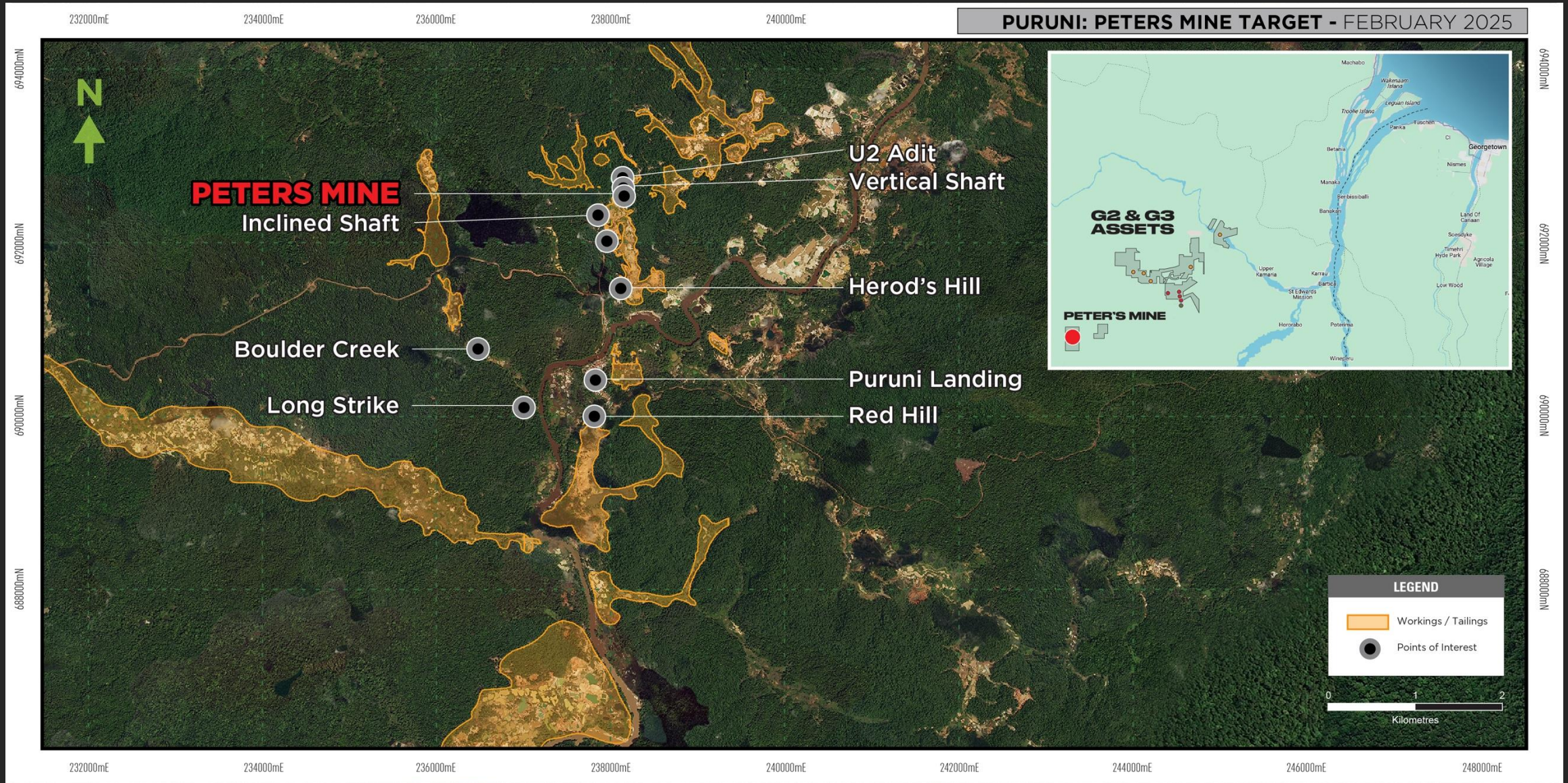
GHANIE LONG SECTION LOOKING WEST WITH CONTOUR PLOTS - FEBRUARY 2025



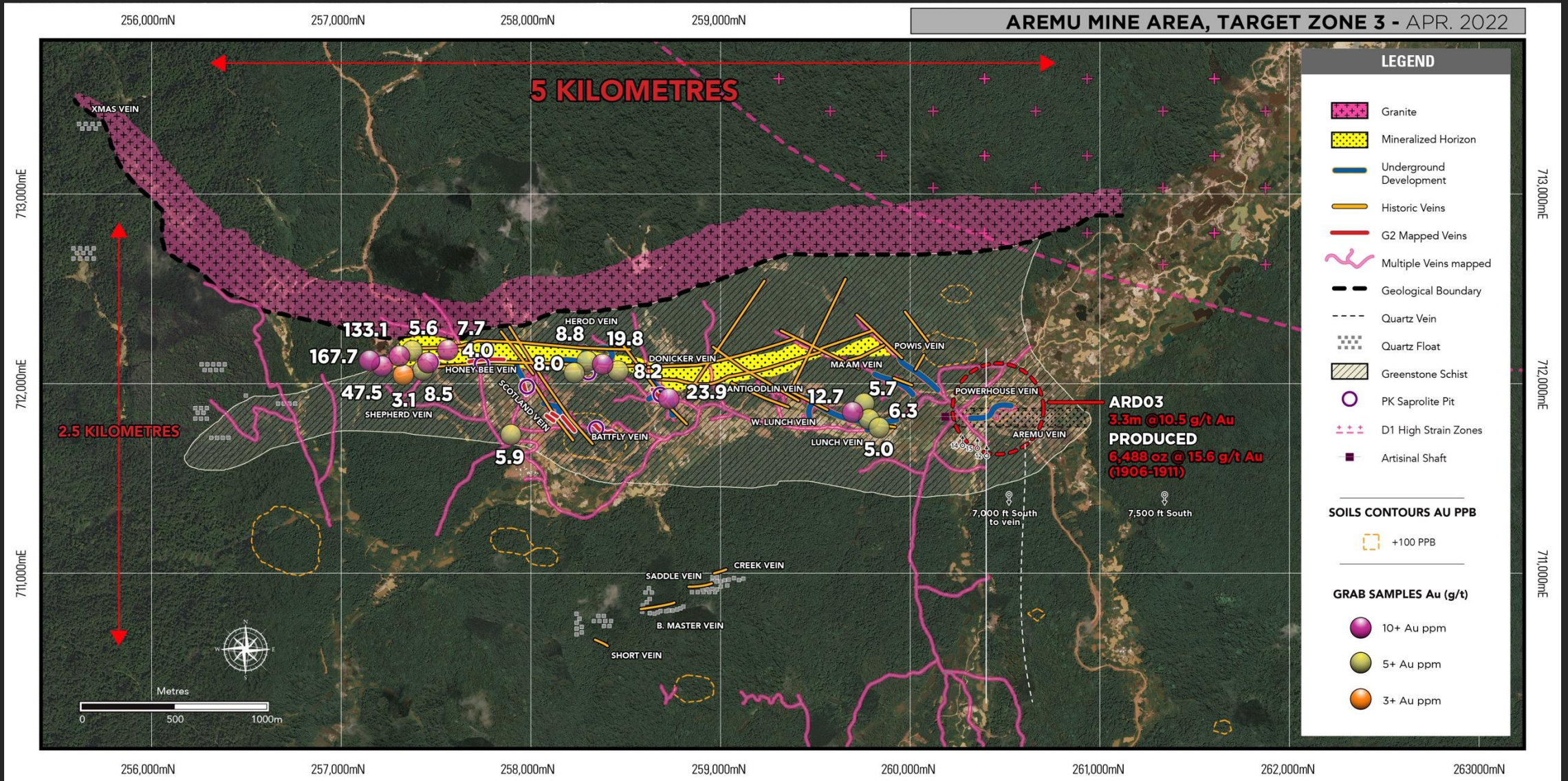
OKO AND GHANIE OBLIQUE VIEW WITH MAGNETIC CONTOURS - FEBRUARY 2025



Peters Mine – 40,000 oz Au @ 41 g/t Au (1905 – 1909)



Aremu Mine – 6,488 oz @ 15.6 g/t Au (1906-1911)



Wariri Mine – 8,957 oz Au recovered (1937-1939) 14 veins identified



G2Goldfields Inc.
 Lower Aremu Claims
 Access road
 Quartz Vein
 Shear Zone
 Strike of Foliation
 Strike & Dip of Foliation

Datum & Projection: WGS 84, Zone21N Scale: 1:20,000



NEAR-TERM CATALYSTS



EXPANDING RESOURCE

Extending along strike to north and exploring northern extension

EXPLORING ALONG STRIKE

Drilling near deposit targets along the Main Oko Trend

UPDATED MRE

Updated Mineral Resource Estimate targeted for Q1 2025

G3 SPIN-OUT COMPLETION

Commencing drilling at Amsterdam, Peters, Aremu and Wariri





Growing/Defining Guyana's Highest Grade Gold Deposit



- ▶ Sixth highest-grade gold resource globally as compared to the top 10 highest-grade producing underground gold mines with a reserve base > 1 Moz Au

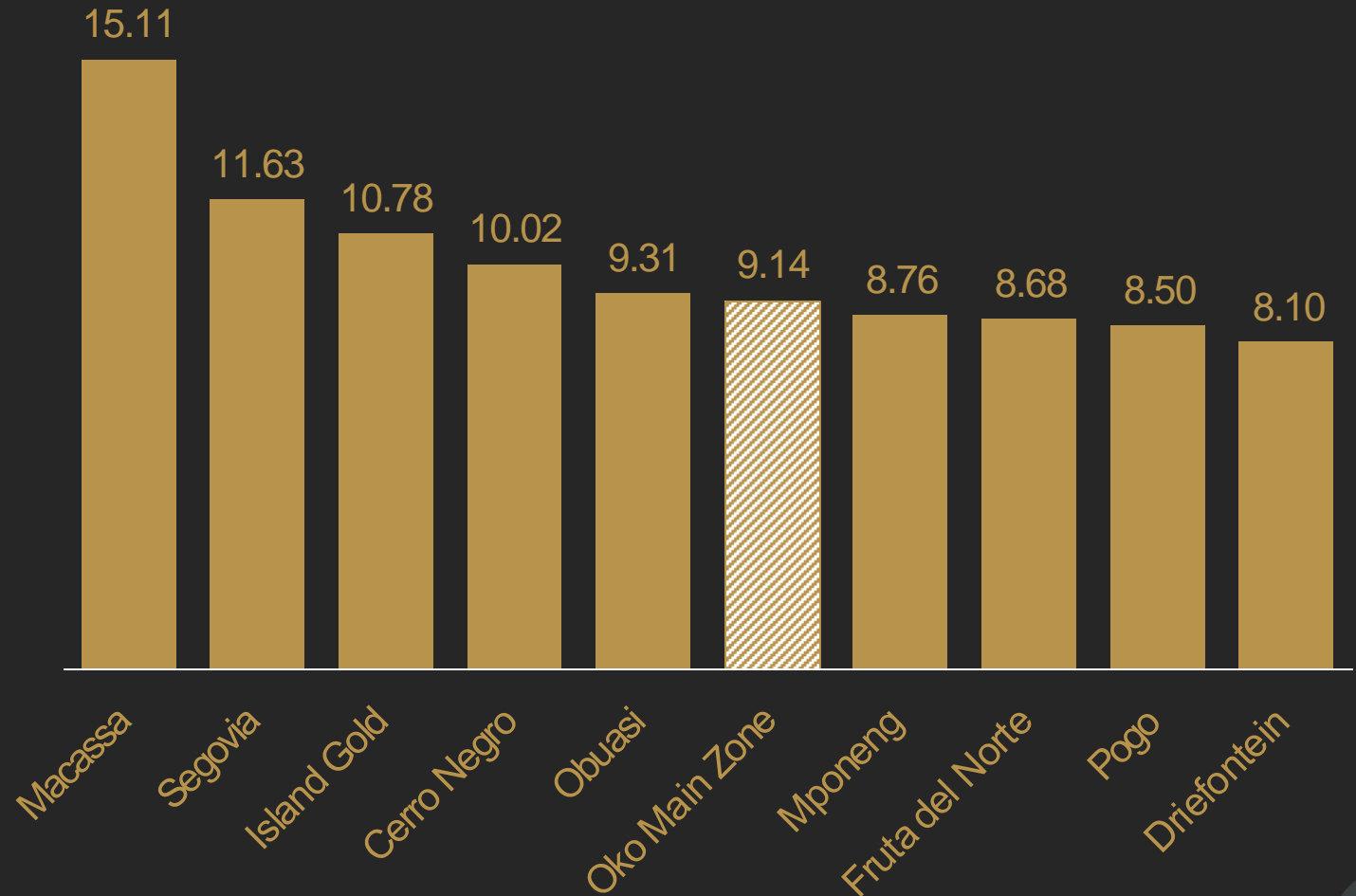


- ▶ Higher grade equals intrinsically more favorable economics:
 - Faster payback period
 - Lower milling Capex and Opex
 - Insulation from commodity price volatility



- ▶ Experienced management team:
 - Developed the Aurora Project to production within country
 - Past discoveries exceed 7 Moz Au
 - Raised over US\$400 million for past exploration and development projects

G2 Goldfields Grade on a Notional Table Vs 10 Highest-Grade Producing Underground Gold Mines Globally with a Reserve of over 1 Moz Au*



Our Commitment

Environmental

- Focus on water management
- Adherence to the GGMC's monitoring guidelines
- Implementation of a waste separation system on site
- Instituting measure for secure transport and storage of chemical materials on site
- Data collection in accordance with the Environmental Baseline Study (EMC Guyana)
- Taking steps to minimise impact, steward the natural environment and preserve ecosystems

Social

- 100% Guyanese on-site geological and field teams
- History of hiring and training personnel from surrounding Missions
- In-country drilling partners — prioritising domestic procurement practices
- On-site medics providing malaria testing & treatment to surrounding area
- Maintaining a safe & healthy workplace environment with occupational training
- Opportunities for building long-lasting socio-economic value in Amerindian communities

Governance

- Strong commitment to transparent reporting
- Fostering a culture of open communication and trust
- Fair, equitable employment and compensation practices
- Aligned to the IFC Equator Principles framework for management best practices
- Promoting and maintaining positive relationships with government agencies and institutions
- Company instituted disclosure and corporate ethics protocols including Whistleblower Policy





Investor Relations
investors@g2goldfields.com

News & Media
news@g2goldfields.com