



G2GoldfieldsInc.
WHERE GRADE MATTERS

Highway to High Grade

September 2023

Forward-Looking Statements

This presentation contains certain forward-looking statements. Wherever possible, words such as "may", "will", "should", "could", "expect", "plan", "intend", "anticipate", "believe", "estimate", "predict" or "potential" or the negative or other variations of these words, or similar words or phrases, have been used to identify these forward-looking statements. These statements reflect management's current beliefs and are based on information currently available to management as at the date hereof. Forward-looking statements involve significant risk, uncertainties and assumptions. Many factors could cause actual results, performance or achievements to differ materially from the results discussed or implied in the forward-looking statements. These factors should be considered carefully and readers should not place undue reliance on the forward-looking statements. Although the forward-looking statements contained in this presentation are based upon what management believes to be reasonable assumptions, the Company cannot assure readers that actual results will be consistent with these forward-looking statements. The Company assumes no obligation to update or revise them to reflect new events or circumstances, except as required by law. Dan Noone, CEO and Director of G2 Goldfields Inc., is the Qualified Person, within the meaning of NI 43-101 and has reviewed the technical content of this presentation.

Corporate Snapshot

As of September 01, 2023

Common Shares Outstanding	183,445,110
Insider Shareholding	54,750,111
Shares Fully Diluted	200,870,110

\$12
Million

Current Cash Position



Clear Management Strategy and Husbandry of Shareholder Funds

Best-in-Class Operators

Trusted industry veterans, management have advanced a pipeline of precious metals projects in-country.

Aurora, Guyana



Patrick Sheridan

LSE-educated economist with 25+ years' experience in the Guiana Shield. Over \$400 million raised for exploration. Credited with finding, financing and developing the Aurora Mine (6.5 Moz). Involved in sales of Gold Eagle & FNX.

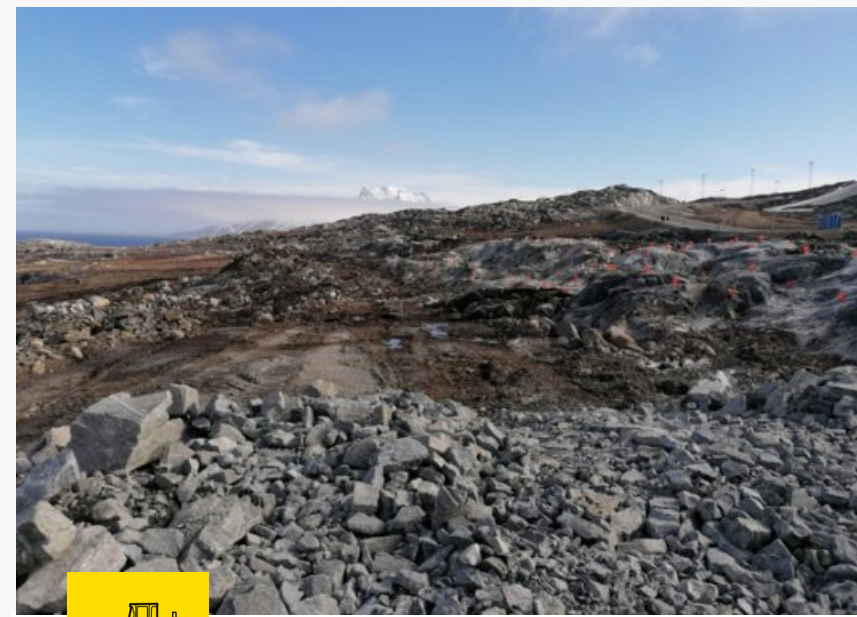
Navidad, Argentina



Dan Noone

Over 30 years in the industry, taking projects from grassroots to feasibility and production (PNG, Guyana, Indonesia, Peru, Ecuador & Argentina). Previously VP Exploration (GGI), V.P. (Aquiline) and President (Absolut). Fellow of the Australian Institute of Geoscientists.

Nuuk Airport, Greenland



Torben Michalsen

Extensive expertise in design optimisation, procurement, permitting and large-scale infrastructure projects (i.e. road access). Acquired in-country knowledge as former CGM Construction Manager (Toroparu) and IAMGOLD Construction Superintendent (Rosebel).

Karouni, Guyana



Boaz Wade

Geoscientist extraordinaire and former manager of the GGI mine exploration geology team. Senior member of the team responsible for successfully reinterpreting mineralisation controls at Aurora as well as remodelling the Kaoruni deposits (Troy Resources).

Local Knowledge, Regional Expertise

Guyanese Geologists, Field Teams, Subcontractors, and Suppliers


EXPAND

Updated Resource
due in Q3 2023


DISCOVER

New Discovery
Adjacent to OKO

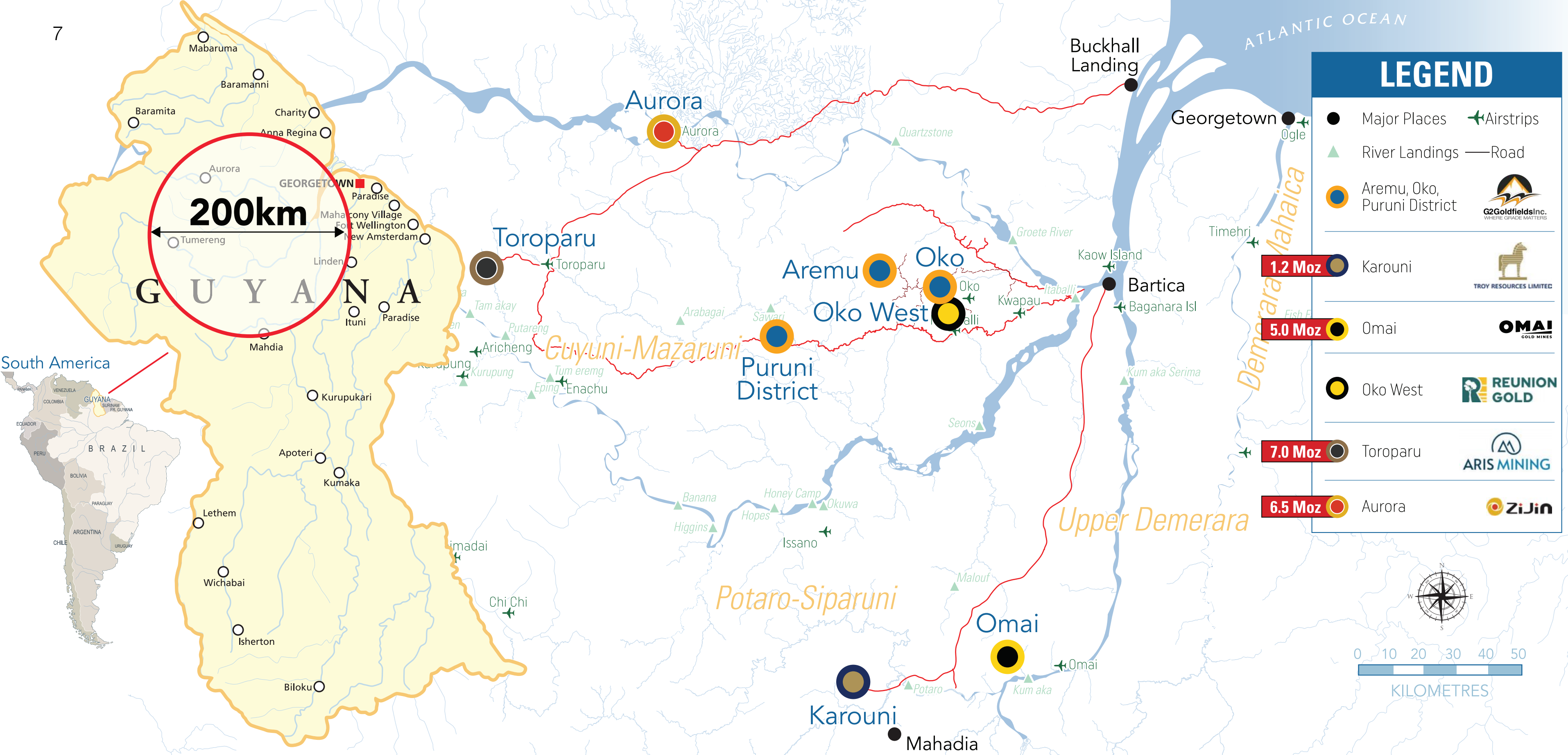

VALUE

Booming jurisdiction;
Majors in the mix.

TARGET

Clear Blueprint to
Bonanza Grade





Guyana's Gold Deposits

Guyana's Growing Economy

- Strong history of gold production and Tier 1 deposits
- The only English-speaking country in South America
- World's fastest growing economy in 2023 by GDP
- ExxonMobil's off-shore oil discovery of ~11 billion barrels
- Mining-friendly jurisdiction; favourable investment climate
- Democratically elected government

The Guiana Shield

"...a significantly underexplored region and one of the most prospective in the world for large-scale gold discoveries"

Mark Bristow

President & CEO of Barrick Gold

255,000mN

260,000mN

265,000mN

270,000mN

OKO AREMU DISTRICT TARGETS - JULY 2023

715,000mE

710,000mE

705,000mE

700,000mE

715,000mE

710,000mE

705,000mE

700,000mE

AREMU

Historical production:
from 1906 - 1911
6,488 oz @ 15.6 g/t Au

AMSTERDAM**TRACY**

2.5 km long gold-in-soil
anomaly (+100 pbb Au)

OKO NW

Multiple active
mid-scale mines

OKO MAIN

974,000 Oz. Inferred @ 9.25 g/t Au
220,000 Oz. Indicated @ 8.63 g/t Au

GHANIE

2022 Discovery
26.6 m @ 5.1 g/t Au

OKO NE**OKO N****RGD Block 4****RGD****LEGEND**

G2 Target Zone

G2 Goldfields Inc.
Claims Boundary

Kilometres



255,000mN

260,000mN

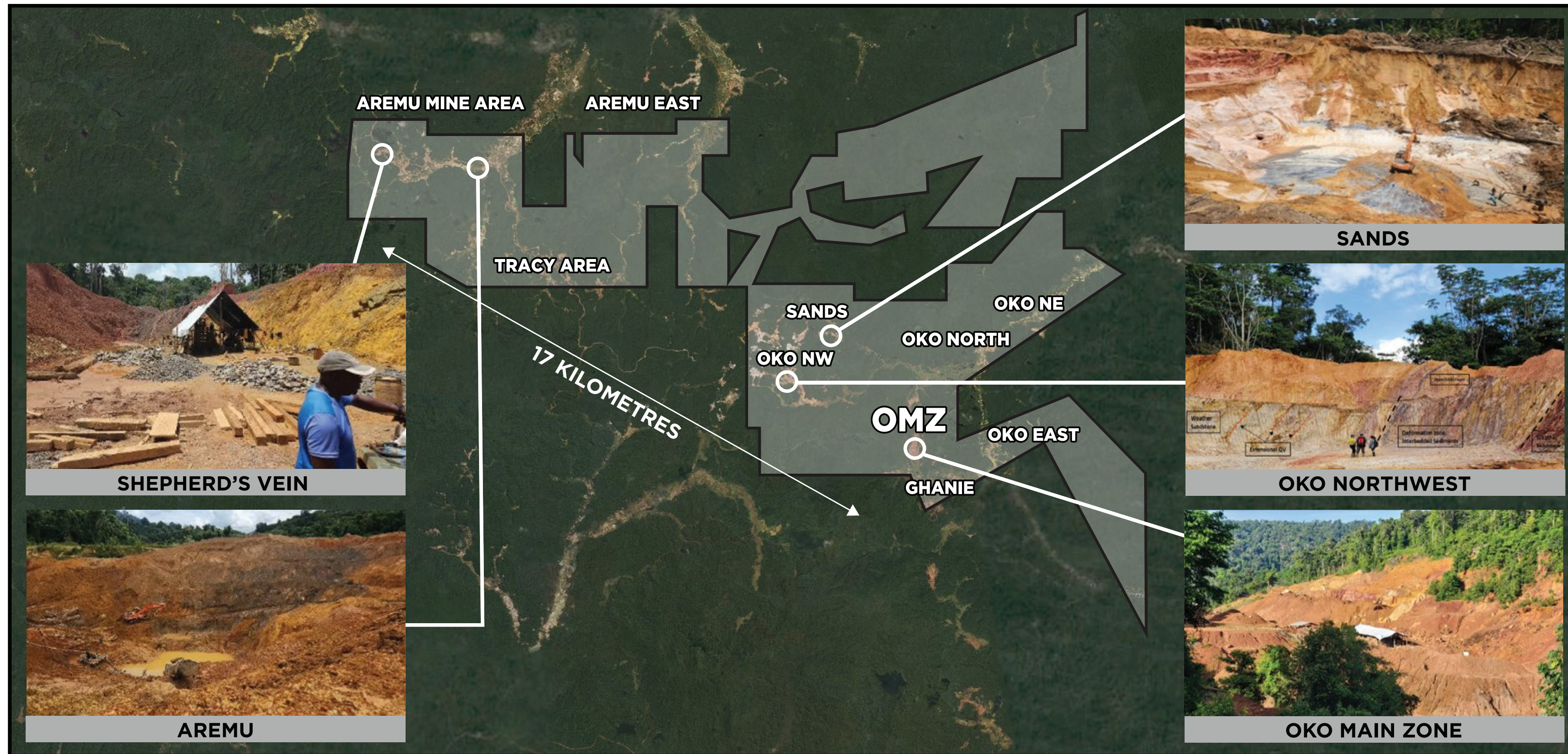
265,000mN

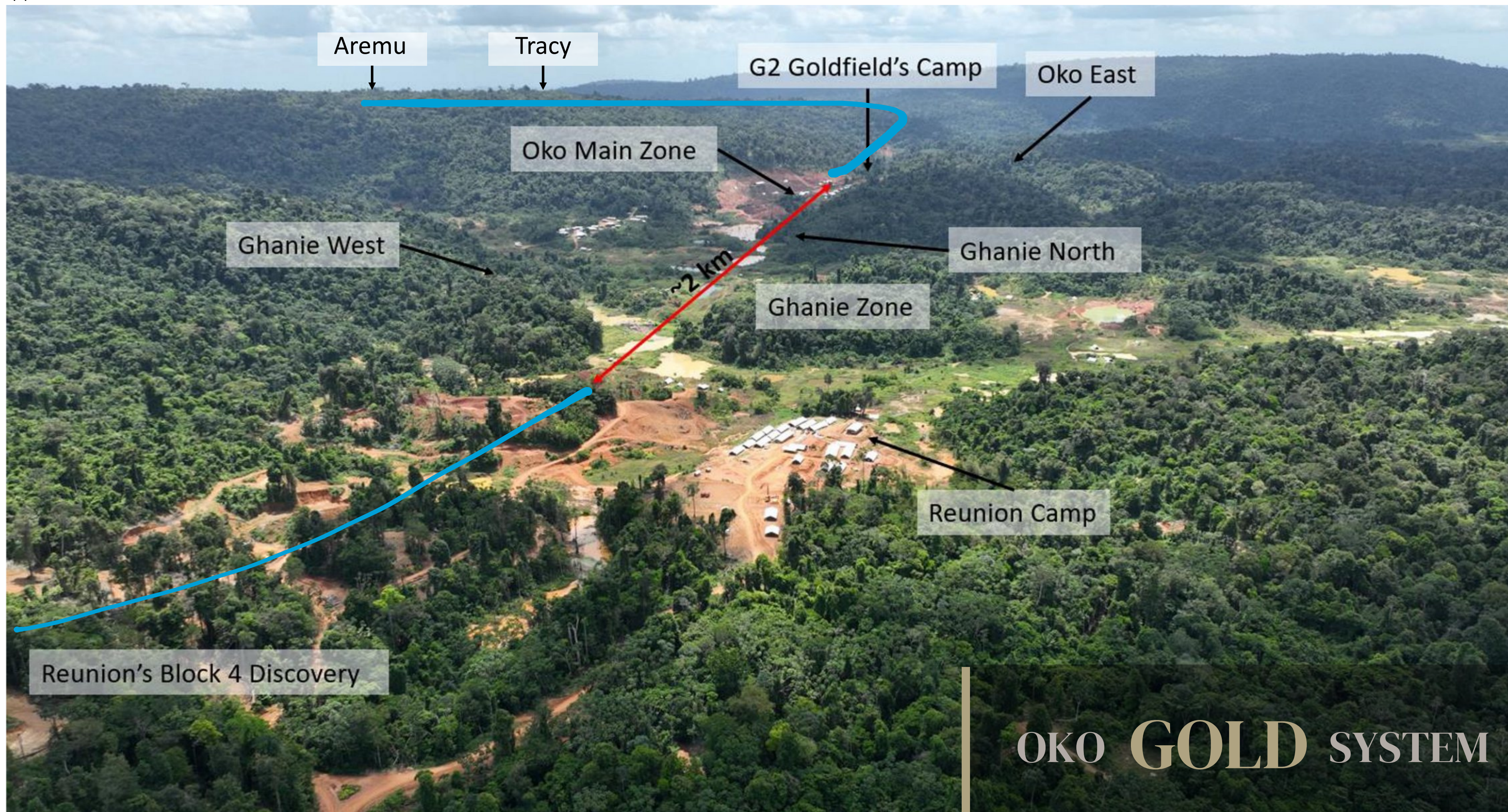
270,000mN

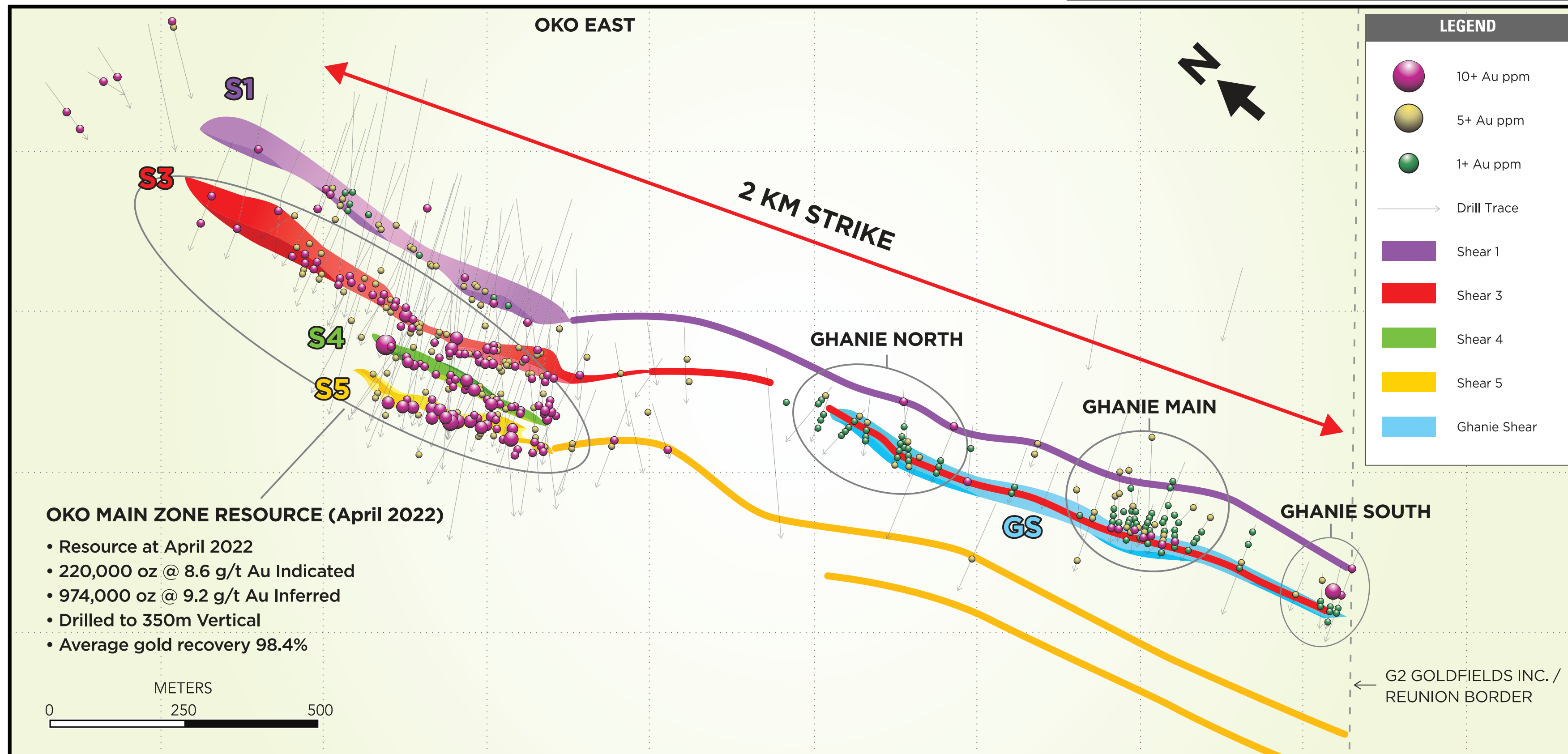
275,000mN

280,000mN

285,000mN



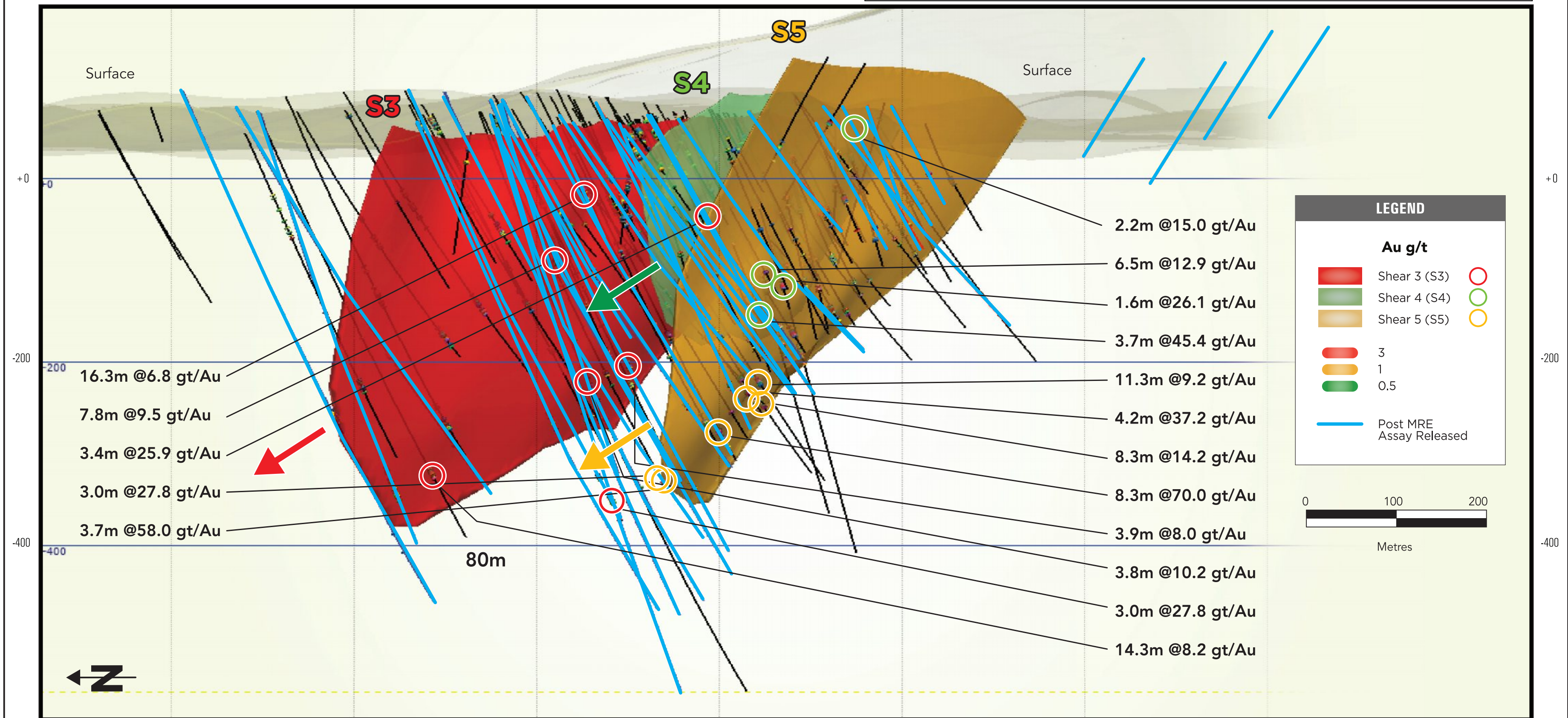


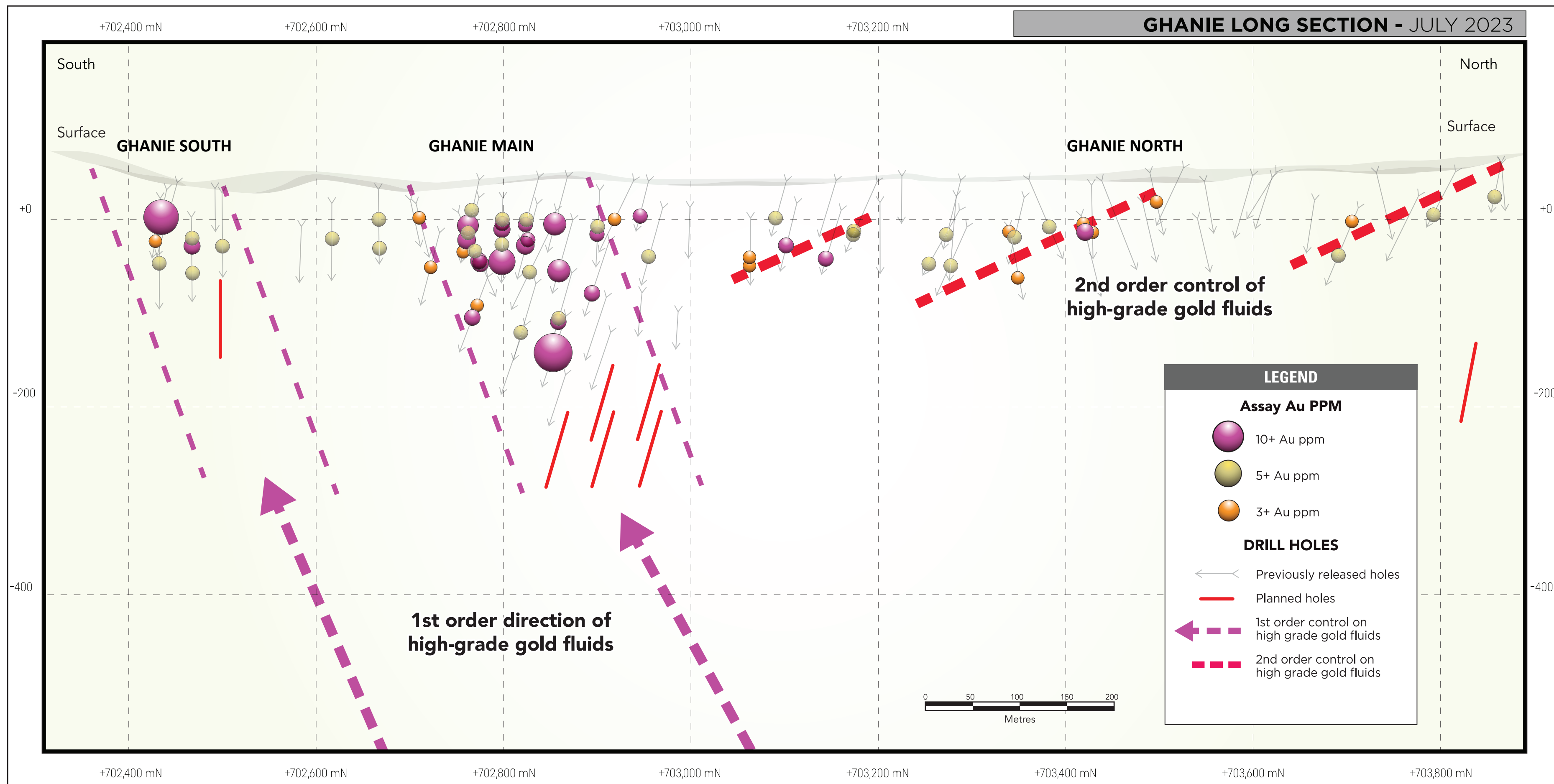


***Mineral Resources for the OMZ Deposit reported at a 4.0 g/t gold cut-off**

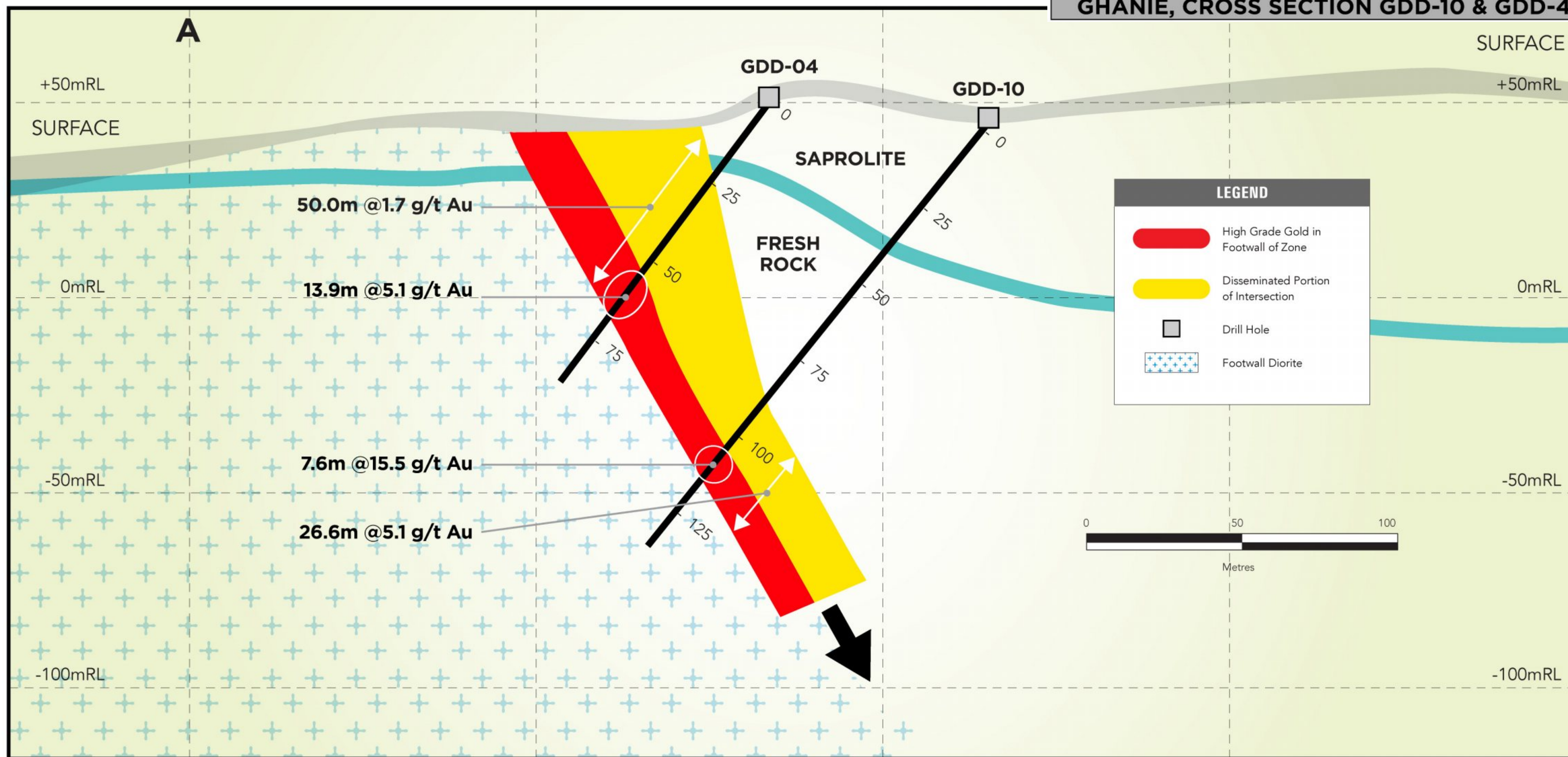
**** Minimum block width 1.5m**

OKO RESOURCE MODEL - SHEARS 3,4 & 5 FEBRUARY 2023





GHANIE, CROSS SECTION GDD-10 & GDD-4



NEAR TERM VALUE CREATING CATALYSTS

High grade **drilling** at OMZ

Expanding **new discovery** at Ghanie

Drilling new **targets** at a district scale

Updated mineral **resource** expected Q4



Investor Relations
investors@g2goldfields.com

News & Media
news@g2goldfields.com

 [@G2Goldfields](https://twitter.com/G2Goldfields)

